

SpO₂ Chart Guide

Whenever in supplementary oxygen

Aim for SpO₂ 88%-92% and ZERO time at 97% -100%

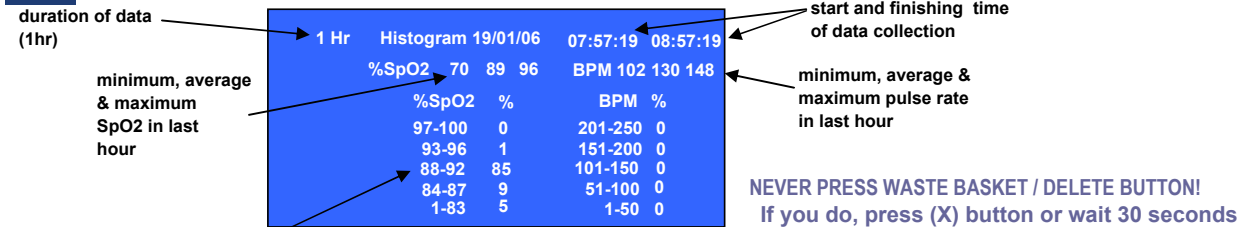
- 1 Never use another oximeter while the BOOST II oximeter is attached
- 2 The BOOST II oximeter must stay on the baby (in hospital and at home), until supplementary oxygen is discontinued according to local protocol
- 3 Keep using the BOOST II oximeter if high SpO₂ is needed, e.g surgery. (It reads true SpO₂ >95% and < 85%)

To minimise risk of ROP and chronic lung disease follow these instructions

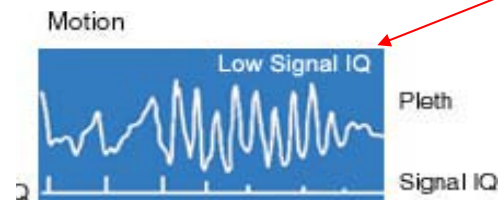
- 1 **Whenever baby is in any supplementary oxygen**
 - ◆ **Upper SpO₂ alarm is set at 94%**
 - ◆ **Lower alarm limit is set at 86%**
 - ◆ **Maximise time spent with SpO₂ between 88 - 92%**
 - ◆ **Aim for ZERO time at SpO₂ 97% -100%**
- 2 **When in air, switch the upper alarm limit to -- (which is off)**
 - ◆ Switch upper alarm back on 94% immediately if the patient goes back into supplementary oxygen!
- 3 **In sustained desaturation:**
 - ◆ First assess the baby for central cyanosis, bradycardia, or poor perfusion before making ANY change
 - ◆ Desaturation without bradycardia is less significant than desaturation with bradycardia
 - ◆ Make small 2 - 5% increases in FiO₂. Stay with baby until saturations stabilize in an acceptable range
 - ◆ If there is poor improvement despite a large increase in FiO₂, contact a doctor
- 4 **DO NOT increase FiO₂ when PaO₂/TcPO₂ is below 50 mm Hg if SpO₂ is > 85% and BP is normal.**
(Remember that fetal Hb is adapted to deliver oxygen to tissues at oxygen tensions below 50 mm Hg)
- 5 **Avoid rapid and large changes in FiO₂. Extreme ups and downs in SpO₂ are risky**
Allow baby to fluctuate within the desired saturation limits
- 6 In sustained hyperoxia
Make small decreases of 2-5% in FiO₂ and remain at the bedside until the situation is stabilizec

How to find the HISTOGRAM screen (to record % time spent at each SpO₂ range in SpO₂ chart)

1. Press "menu page" to get "trend display" (see 2).
2. Press "trend display" (see 3)
3. Press "menu page" to get "Histogram" (see 4)
4. Press this to display histogram screen (below)



% time spent in each SpO₂ range: e.g SpO₂ was 88% - 92% for 85% of last hour and 97-100% for 0% of last hour - **WELL DONE!**



LOW SIGNAL IQ

- ◆ **If Low Signal IQ flashes, SPO₂ READINGS ARE UNRELIABLE !**
 - ◆ **The baby is at risk of undetected hyperoxia or hypoxia.**
 - ◆ **You must fix this immediately**
- CHECK**
- (a) sensor is well applied
 - (b) emitter and detector are well aligned.
 - (c) no occlusion to limb blood flow, e.g bp cuff
 - (d) exclude severe hypotension or poor perfusion
- ◆ **Write "low signal IQ" in comments column of SpO₂ chart**