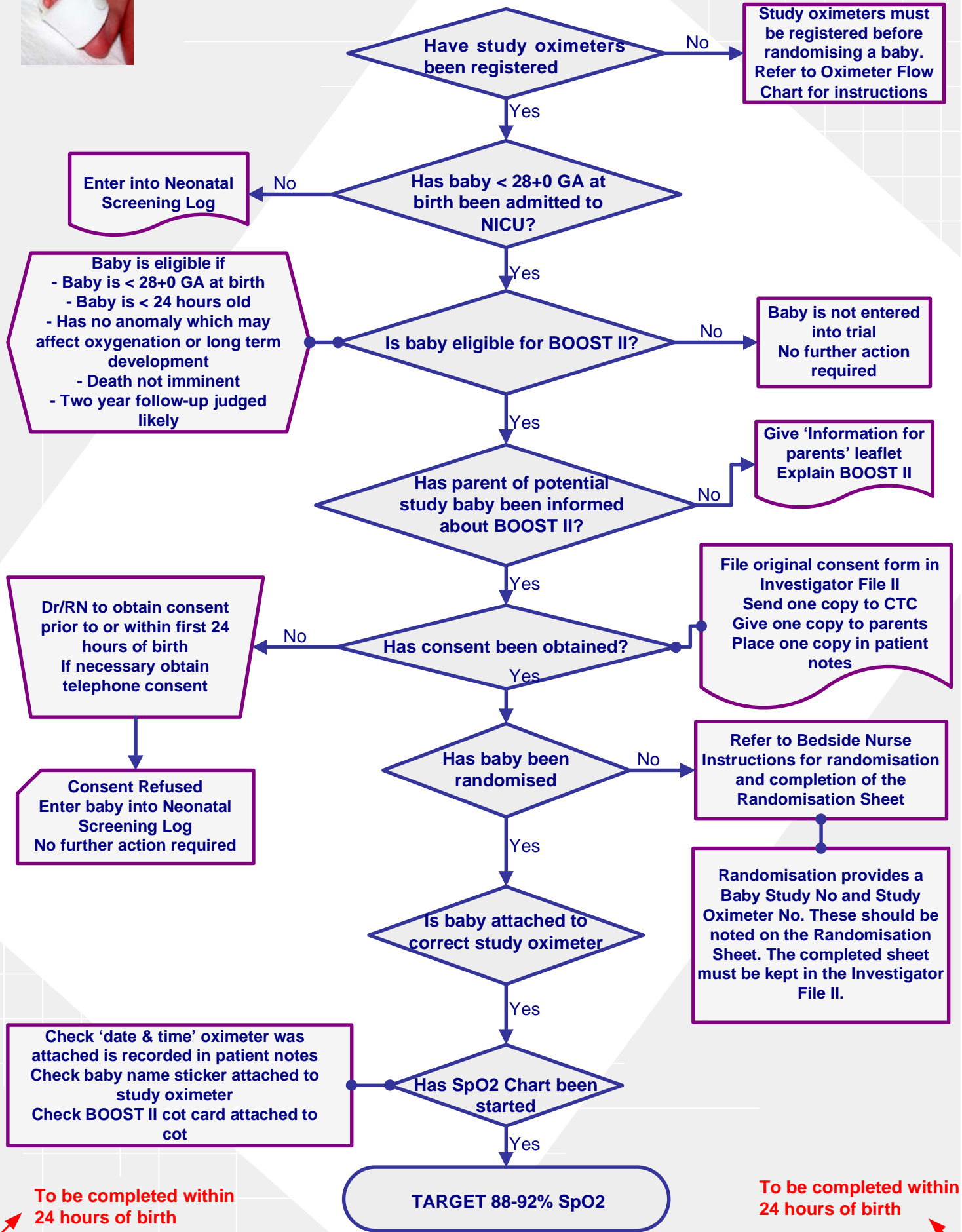




Research Nurse Flow Chart



To be completed within 24 hours of birth

To be completed within 24 hours of birth

Log on to BOOST II Website, enter patient data

Help available under 'Data Management Guidelines' in Investigator File

Enter the details of study baby into Neonatal Screening Log
Initiate Oximeter Tracking Log for this study baby

Review SpO2 charts regularly for compliance to SpO2 targets
Provide daily/weekly compliance feedback to bedside nurses
Monthly compliance feedback will be provided from the CTC

Once per week send completed SpO2 charts to CTC by post

Complete Case Report Forms

Help available under 'Data Management Guidelines' in Investigator File
Essential Contact Information Form - to be completed as soon as possible
Baseline Form - to be completed within 1 week of randomisation of study baby
36 Weeks Form - to be completed at 36 weeks corrected gestational age
Discharge Form - to be completed at time of discharge
Follow-up Form - to be completed (by phone call) at intervals between 36 week and 2 year assessment - to maintain updated contact details (e.g. 6,12,18mths)
Serious Adverse Event Form - to be completed at time of event
Death Form - to be completed if baby dies

Do not delete downloaded data from oximeter, old data will automatically be overwritten
Detailed instructions available in the Study Handbook

Once per fortnight download data from study oximeter
Transfer data to CTC by email AND in addition burn data onto CD Rom. Post immediately to CTC
Record download episodes on Oximeter Tracking Log

When BOOST II Baby no longer needs study oximeter -
make a 'Dispatch Oximeter' phone call

you will need the oximeter serial number
Detailed instructions in Study Handbook

Re-pack study oximeter in its original box and return by post to CTC.

only the handheld and not the docking station

Update Oximeter Tracking Log

If BOOST II Baby is to be transferred to another Hospital Complete discharge form (required for every hospital transfer).
Check Essential Contact Information Form is up to date
Maintain a 'Transfer Log' for the study baby
Continue to maintain all documents relevant to the study for that baby.
Inform CTC.
Ensure staff at receiving hospital know about BOOST II

If there are no more study oximeters left at your site -
this is an emergency situation
Please phone BOOST II Project Manager immediately on 02 9562 5341 (24 hours)